

LABC Registered Details

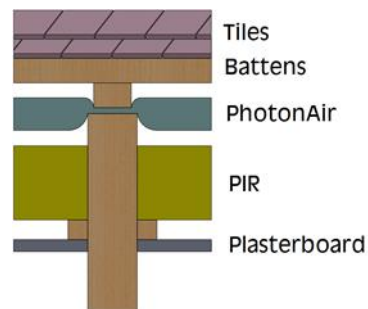
Pitched Roof, U=0.18, 600 rafter, PhotonAir over, PIR between

RBC_600_PA33_CP_0.18

1 Application

Barn conversion with exposed rafters; small change in roof height:

- Pitched roof
- U-Value = 0.18
- PhotonAir taught above rafter
- 600mm rafter spacing
- 95mm PIR λ 0.020 additional insulation between rafters
- Plasterboard



2 Product information

PhotonAir is a breathable lightweight thin flexible reflective insulation that incorporates a breathable underlay. It is constructed with glasswool at its core encapsulated by a perforated reflective lower layer and Klobber Permo Air roofing underlay upper layer. In accordance with EN16012 PhotonAir is classified as a Type 1 reflective insulation product.

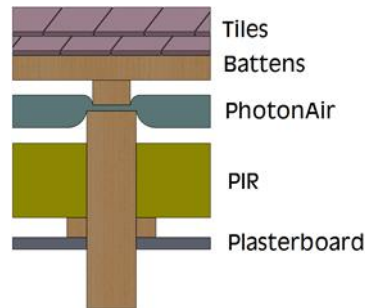
It has been designed for and fully tested in accordance with the EN 16012 standard for reflective insulation products, including the application of 90/90. All testing of the product has been carried out by accredited test houses and Notified Bodies. PhotonAir has been tested to determine the 90/90 fractile and accordingly has a core thermal resistance of 0.97 M²K/W and an emissivity value of 0.05.

Thermal resistance ($\lambda_{90/90}$)	0.034	W/m.K
Emissivity	0.05	
Water vapour resistance	0.22	MN.s/g
Fire performance	Class E	
Product thickness	33	mm
Core R value	0.97	Km ² /W
Core R value with 1 air space	1.45	Km ² /W
Airspace thickness	≥ 13	mm
Direction of heat flow	Vertical	
Width	1.2	M
Weight	1.0	Kg/m ²
Roll length	10	lm

LABC Registered Details

Pitched Roof, U=0.18, 600 rafter, PhotonAir over, PIR between

3 Over rafter installation



Install in line with our general installation instructions:

1. Staple PhotonAir taught over rafters, reflective surface down, and secure with 25x38mm counter battens running along the rafter.
2. Each layer of PhotonAir must butt-join the previous layer, with the 150mm membrane overlap running onto the lower layer, thus ensuring that any water runs down without penetrating between layers.
3. Fix tile battens and tiles.
4. Insert secondary insulation between the rafters and hold in place with 20mm battens, ensuring a tight fit and that there are minimum 13mm unventilated air cavities between secondary insulation and the underside of the PhotonAir.
5. Plasterboard and skim.

4 Declared Testing Method

BS EN 16012:2012 states that where a product is already subject to a product specification that describes procedures for the measurement of the aged 90/90 fractile thermal conductivity or thermal resistance of the core insulation material, its guidance should only be used to determine the component of its thermal performance that depends on the emissivity of its external faces; this is the case for PhotonAir:

1. PhotonAir is classified under BS EN 16012:2012 as product type 1 and is manufactured by Thermic Technology Ltd; registered under ISO 9001 for the design and manufacture of thin reflective insulation.
2. PhotonAir is an assembly of three components:
 - a. Upper surface: Klobber Permo Air breather membrane
 - b. Core: 33 mm $\lambda 0.034$ glasswool
 - c. Lower surface: Perforated reflective layer manufactured specifically for PhotonAir

LABC Registered Details

Pitched Roof, U=0.18, 600 rafter, PhotonAir over, PIR between

3. The core of PhotonAir is $\lambda 0.034$ glasswool manufactured in accordance with BS EN 13162:2012, BS EN 13172:2012 and ISO9001 Quality Management Systems and meets the requirements of Annex ZA of Harmonised European Product standard EN 13162 with its conformity established according to Harmonised European standard EN 13172.
4. PhotonAir upper surface declared performance is according to EN 13859-1:2010 and EN 13859-2:2010.
5. PhotonAir lower surface has been tested by NAMAS accredited laboratories in accordance with BS EN 16012:2012 for emissivity and ISO 12572 for water vapour permeability.
6. PhotonFoil has been fire tested to BS EN 11925-2.
7. PhotonFoil has a core R value of $0.97 \text{ Km}^2/\text{W}$, and an emissivity of 0.05 declared to 90/90.

5 U value calculation and condensation risk

PhotonAir has a defined vapour resistance of 0.22 MN.s/g and when installed above the rafters the risk of condensation calculated in accordance with BS EN ISO 13788 is zero.

The U-Value and condensation risk analysis follow:

Project Information

Reference PhotonAir
 Date Feb 2016
 Client LABC Registered System

Construction Type

Element : Pitched roof, ceiling at rafter line - RBC_600_PA33_CP_0.18
 Barn conversion (semi exposed rafter): PhotonAir, counter batten with additional insulation between rafters, 600mm centre
 Internal surface emissivity : High External surface emissivity : High

Correction for mechanical fasteners :-

Alpha	: 0.8 per m	Thermal conductivity of fastener	: 17.00 W/mK
Fasteners per square metre	: 6.70 off	Fasteners cross-sectional area	: 7.45 mm ²
		Thickness	Thermal Thermal Pitch Bridge
		(mm)	Conductivity Resistance (°) Details
Outside surface resistance	-	-	0.100
Tiling including batten space	-	-	0.000
Counter Batten	25.0	-	0.000
PhotonAir	33.0	0.034	0.971
			6.3% Timber (33.0mm)
Cavity (low emissivity) rafter space >=13mm	13.0	-	0.481
			7.8% Timber (13.0mm)
(Bridged un-vented cavity - width=553.0mm, hro=5.100, E1=0.050, E2=0.050, upward heat flow)			
Kooltherm K7	95.0	0.020	4.750
			7.8% Timber (95.0mm)
Side batten cavity	20.0	-	0.454
			7.8% Timber (20.0mm)
(Bridged un-vented cavity - width=553.0mm, hro=5.100, E1=0.050, E2=0.900, upward heat flow)			
Plasterboard (BS5250)	12.5	0.170	0.074
Plaster, lightweight (BS5250)	3.0	0.220	0.014
Inside surface resistance	-	-	0.100

	Thickness (mm)	Thermal Conductivity (W/mK)	Thermal Resistance (m ² K/W)	Vapour Resistivity (MNs/gm)	Vapour Resistance (MNs/g)
Outside surface resistance	-	-	0.100	-	-
Tiling including batten space	-	-	0.000	-	0.00
Counter Batten	25.0	-	0.000	-	0.00
PhotonAir	33.0	0.034	0.971	-	0.22
Cavity (low emissivity) rafter space >=13mm (Bridged un-vented cavity - width=553.0mm, hro=5.100, E1=0.050, E2=0.050, upward heat flow)	13.0	-	0.481	-	0.00
Kooltherm K7	95.0	0.020	4.750	-	100.00
Side batten cavity (Bridged un-vented cavity - width=553.0mm, hro=5.100, E1=0.050, E2=0.900, upward heat flow)	20.0	-	0.454	-	0.00
Plasterboard (BS5250)	12.5	0.170	0.074	60.00	0.75
Plaster, lightweight (BS5250)	3.0	0.220	0.014	30.00	0.09
Inside surface resistance	-	-	0.100	-	-

U-value = 0.18W/m²K

U-value, Combined Method : 0.180W/m²K (upper/lower limit 5.893 / 5.195m²K/W, dUf 0.0004, dUg 0.0000, dUp0.0000, dUr0.0000, dUrc0.0000)

(Correction for mechanical fasteners, Delta Uf = 0.000W/m²K)

(Correction for air gaps, Delta Ug = 0.000W/m²K)

(Based on the combined method for determining U-values of structures containing repeating thermal bridges)

Condensation Risk Analysis (no account taken of thermal bridges)

4 - Dwellings with high occupancy, sport halls, kitchens, canteens; buildings heated with unflued gas heaters

Jan (worst)	Feb	Mar	Apr	May	Jun	Jul	Aug	Sep	Oct	Nov	Dec
20.0C 69.1%	20.0C 68.0%	20.0C 67.0%	20.0C 66.2%	20.0C 68.0%	20.0C 70.7%	20.0C 74.3%	20.0C 75.1%	20.0C 73.4%	20.0C 71.2%	20.0C 69.2%	20.0C 69.3%
2.5C 90.0%	2.8C 86.5%	4.7C 84.0%	7.0C 81.0%	10.3C 81.0%	13.4C 80.0%	15.5C 80.5%	15.1C 82.5%	12.8C 85.5%	9.7C 88.0%	5.4C 89.5%	3.5C 90.5%

	Interface Temp. °C	Dewpoint Temp. °C	Vapour Pressure (kPa)	Saturated V.P. (kPa)	Worst Cond. (g/m ²)	Peak Buildup (g/m ²)	Condensation
1 Outside surface resistance							
2 Tiling including batten space	2.8	1.0	0.66	0.74			No
3 Counter Batten	2.8	1.0	0.66	0.74			No
4 PhotonAir	2.8	1.0	0.66	0.74			No
5 Cavity (low emissivity) rafter space >=13mm	5.2	1.1	0.66	0.88			No
6 Kooltherm K7	6.4	1.1	0.66	0.96			No
7 Side batten cavity	18.4	14.1	1.61	2.11			No
8 Plasterboard (BS5250)	19.5	14.1	1.61	2.27			No
9 Plaster, lightweight (BS5250)	19.7	14.2	1.61	2.30			No
10 Inside surface resistance	19.7	14.2	1.61	2.30			No

Worst case internal / external conditions for graph : 20.0°C @ 69.1%RH / 2.5°C @ 90.0%RH

